

**\$1.00 / PSF, NNN
FIRST YEAR
ON A 5 YEAR LEASE**

FOR LEASE

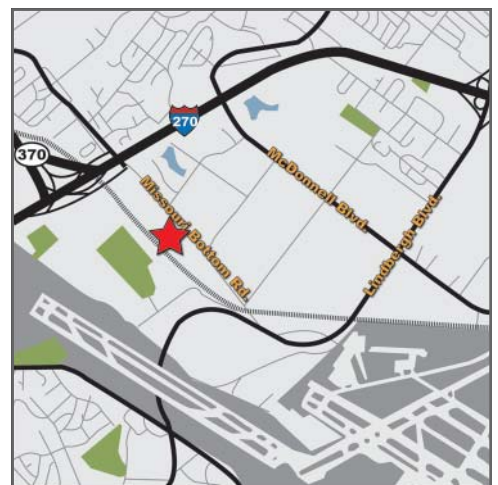
Industrial Space



Missouri Bottom Road

**12000 Missouri Bottom Rd.
Hazelwood, MO 63042**

- *59,621 sq. ft. Available*
- *40' x 40' Column Spacing*
- *24' Clear Ceiling*
- *Fenced in Outside Storage*
- *Air Conditioned Warehouse*
- *White Walls / Ceiling*
- *Cross Docking*



*** BROKER BONUS - 5% TO PROCURING BROKER ***

Mark Youngquist
314.569.5000
MYoungquist@AltusProperties.com



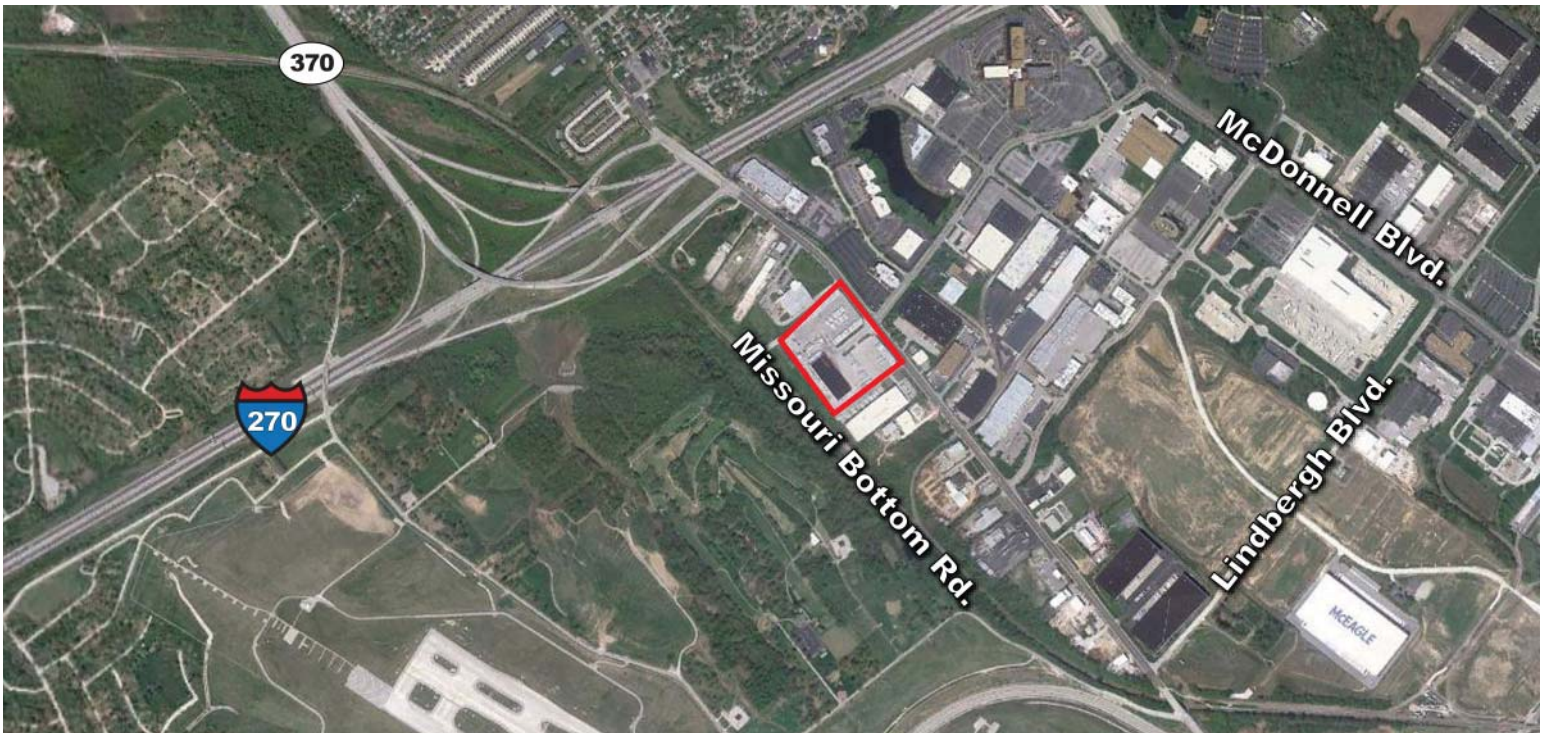
FOR LEASE Industrial Space

12000 Missouri Bottom Rd.
Hazelwood, MO 63042



* 5% FEE TO
PROCURING
BROKER*

\$1.00 / PSF, NNN
FIRST YEAR
ON A 5 YEAR LEASE!



Mark Youngquist
10560 Old Olive St Rd
St Louis, MO 63141
www.AltusProperties.com
P.314.569.5000





Missouri Bottom Road

12000 Missouri Bottom Rd.
Hazelwood, MO 63042



AS BUILT

Suite 1200: 59,621 SF

